

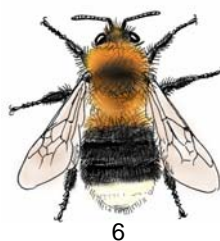
Humlor (honor) i fjälltrakterna, subalpina och alpina regionen



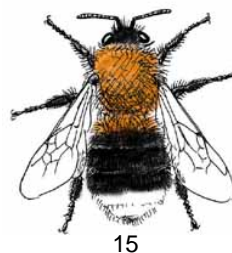
24



7



6



15



39



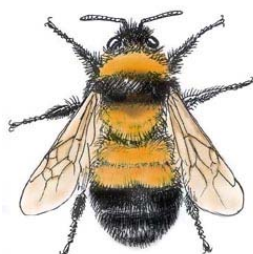
1



25



21,(18)



14



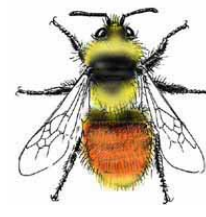
2



12



16



18,(21)



36



8,19,20



31



26



11



4



23,35

Släktet *Bombus*

| | |
|---|----|
| <i>B. pascuorum</i> , åkerhumla | 24 |
| <i>B. consobrinus</i> , stormhattshumla | 7 |
| <i>B. cingulatus</i> , taigahumla | 6 |
| <i>B. hypnorum</i> , hushumla | 15 |

| | |
|----------------------------------|----|
| <i>B. wurlenii</i> , tjuvhumla | 39 |
| <i>B. alpinus</i> , alphumla | 1 |
| <i>B. polaris</i> , polarhumla | 25 |
| <i>B. monticola</i> , bergshumla | 21 |

| | |
|-------------------------------------|----|
| <i>B. hyperboreus</i> , tundrahumla | 14 |
| <i>B. balteatus</i> , fjällhumla | 2 |
| <i>B. hortorum</i> , trädgårdshumla | 12 |
| <i>B. jonellus</i> , ljunghumla | 16 |
| <i>B. lapponicus</i> , lapphumla | 18 |

| | |
|--|-----------|
| <i>B. sporadicus</i> , rallarjordhumla | 32 |
| <i>B. lucorum coll.</i> , jordhumlor | 8, 19, 20 |
| <i>B. soroensis</i> , blåklockshuml | 31 |
| <i>B. pratorum</i> , ängshumla | 26 |
| <i>B. flavidus</i> , lappsnylthumla | 11 |
| <i>B. bohemicus</i> , jordsnylthumla | 4 |
| <i>B. norvegicus/ B. sylvestris</i> , hussnylthumla, ängssnylthumla | 23, 35 |